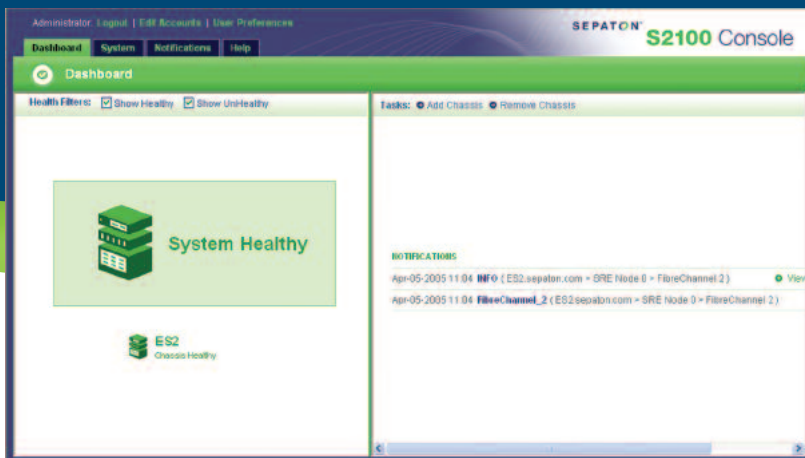


SEPATON S2100™

MANAGEMENT CONSOLE



Centralized management of
your entire SEPATON virtual
tape library infrastructure

BROWSER-BASED

Access from any network workstation, no host software required

SIMPLIFIES CONFIGURATION

Graphical interface simplifies configuration and management
of VTL systems and components

IMPROVES MONITORING

Monitor your entire VTL infrastructure in real-time and pinpoint
failures rapidly

SECURE

Role-based access allows users to view only; administrator
privileges required for system changes

RAPID VTL CONFIGURATION. CENTRALIZED MANAGEMENT. BROWSER SIMPLICITY.

In today's budget-constrained IT environment, you need to ensure maximum uptime of your backup/restore systems, while minimizing management cost and complexity. The SEPATON S2100 Management Console helps you meet this challenge, with simple, centralized monitoring and management of your entire SEPATON S2100 Virtual Tape Library infrastructure.

BROWSER-BASED CONSOLE

No host software is required. Access the SEPATON S2100 Management Console from any network workstation via a standard web browser. Configure, monitor and manage all your VTLs using a single graphical console, locally or remotely.

INTUITIVE GRAPHICAL VIEW

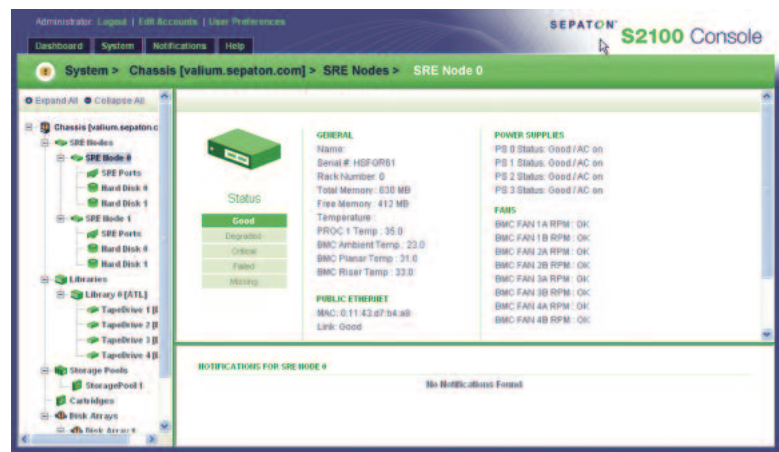
See your VTL infrastructure like never before. Intuitive, hierarchical view of your entire backup/restore environment lets you see at a glance all systems—then “drill down” to view details on specific VTLs, SRE nodes, tape libraries, disk drives, and other elements.

CONFIGURATION MADE EASY

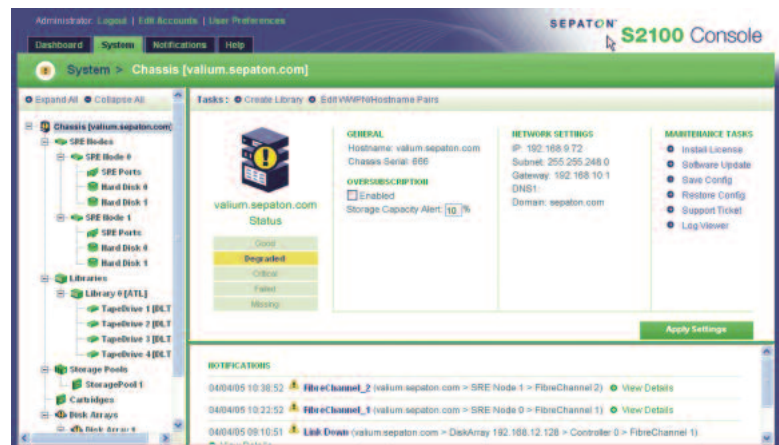
Configuring your SEPATON S2100 VTL is easier than ever with the SEPATON S2100 Management Console. Wizards guide you step-by-step through the process of adding and configuring components. From a single, graphical console, you can:

- Add or delete virtual libraries
- Add or delete virtual tape drives
- SRE node port mapping, LUN Mapping/ LUN Masking
- Add or delete virtual tape cartridges
- Dynamically expand or shrink virtual cartridges
- Add new disk storage
- Configure network parameters
- Update firmware
- Restart appliances

Role-based access requires administrator privileges to modify configuration, ensuring system security. Users have view-only permission.



The S2100 Management Console provides an intuitive, graphical view of your entire VTL infrastructure. With a single click, “drill down” for details on a specific system element or component.



In the event of component failure, the S2100 Management Console pinpoints the source of the failure and its impact on total system health. Automatic email alerts ensure rapid response, to ensure uninterrupted data availability.

REAL-TIME SYSTEM MONITORING

Keep tabs on every aspect of your VTL infrastructure and pinpoint failures rapidly. The SEPATON S2100 Management Console provides real-time monitoring of status and health of multiple SEPATON S2100s, including:

- Storage space used and available in storage pool
- Node temperature, fan status, CPU status, power supply status
- Disk array temperature, fan status, power supply status, disk health status, RAID/expansion controller status
- Virtual library status (geometry, number of cartridges, number of drives, robotics LUN, library tape)
- Virtual cartridge status (barcode, capacity, type, free space, write-protect status)

Integrated email notification allows customization of trouble notification levels (All, Critical and Warnings) and email format (short, long or long with troubleshooting attachments).

The S2100 Management Console also supports SNMP trapping.

ADVANCED BACKUP MANAGEMENT CAPABILITIES

The S2100 Management Console supports advanced backup management features of the S2100-ES2™ VTL, including:

- Virtual Fire Safe—automatically move data to a virtual “fire safe” to free up VTL slots, while protecting moved data from overwriting.
- Tape Transfer—transfer virtual tapes from one library to another on the S2100-ES2.

A Commitment to Data Protection

At SEPATON, we are entirely focused on a single goal: to provide the most capable, easy-to-use enterprise data protection solutions available. Our breakthrough solutions enable corporate data centers to keep pace with their growing information protection needs, while reducing their total cost of ownership. With significant engineering resources and innovative, proprietary technologies, SEPATON is committed to expanding its product family to provide the industry's most complete solution for protecting your critical data—and preserving your technology investment.

© 2005 SEPATON Inc.

SEPATON, S2100, and S2100-ES2 are trademarks of SEPATON Inc. Other product and company names mentioned herein may be trademarks and/or registered trademarks of their respective companies.