

# SEPATON S2100-DS™

## VIRTUAL TAPE LIBRARY SYSTEM



High-performance  
backup/restore appliance  
with plug-and-play  
simplicity

### EASY TO INTEGRATE

Requires no modification of existing storage or backup infrastructure

### EASY TO USE

No changes in user routines; graphical management interface

### HIGH PERFORMANCE

Up to 10 times faster than tape drive systems

Up to 3 times faster than host-based disk-to-disk backup/restore

### FLEXIBLE

Enables multiple tape library types and multiple tape format emulations in a single appliance

### EXPANDABLE CAPACITY

From 1.5 to 6 terabytes in a single appliance

# SHRINK BACKUP WINDOWS. ACCELERATE RESTORE TIMES. REDUCE COSTS.

## **S2100-DS VIRTUAL TAPE LIBRARY SYSTEM**

**In today's data-intensive, round-the-clock organizations, backup demands are growing—while backup windows are shrinking. The SEPATON S2100-DS Virtual Tape Library System meets this critical challenge with a high-performance, compact, RAID-based solution that:**

- performs backups at up to 540GB/hour—up to 10 times faster than tape systems and up to 3 times faster than host-based disk-to-disk systems
- emulates a variety of popular tape library systems—requiring no changes in end-user behavior
- integrates quickly and easily with existing storage and server infrastructures—it's up and running within minutes
- enables cost-effective capacity upgrades—from 1.5 to 6 terabytes—to keep pace with growing enterprise requirements

## **A TURNKEY SOLUTION**

The SEPATON S2100-DS is a complete backup/restore solution that combines Fibre Channel adapter technology, ATA RAID disk storage and SEPATON's unique emulation technology to dramatically increase backup/restore performance and flexibility.

The S2100-DS emulates a variety of popular tape library environments and integrates with existing backup/restore applications, including: VERITAS NetBackup™, VERITAS Backup Exec™, Legato Networker™, CommVault® Qinetix™, BakBone NetVault™, IBM® Tivoli®, and others. To users, it looks and operates exactly like their existing tape library—except that it delivers wire-speed data transfer.

## **EASY INTEGRATION**

The S2100-DS offers appliance-like ease of integration in both SAN and non-SAN storage and server environments. The system can be up and running in minutes. Configuration is simple with the S2100-DS's graphical management interface. Console views of the library, media management and device management look

exactly the same as the familiar tape library (a CLI is also provided). The S2100-DS conserves precious space with its compact, 4U footprint.

### FLEXIBLE EMULATION

The S2100-DS can be quickly configured to emulate a variety of automated tape libraries from StorageTek®, Quantum®, ADIC®, and others. It also offers the ability to emulate multiple tape libraries simultaneously—accommodating heterogeneous server/application environments with a single system to reduce overall costs. The S2100-DS emulates a variety of tape formats, including DLT, SDLT, LTO, AIT, and more.

### UNSURPASSED PERFORMANCE

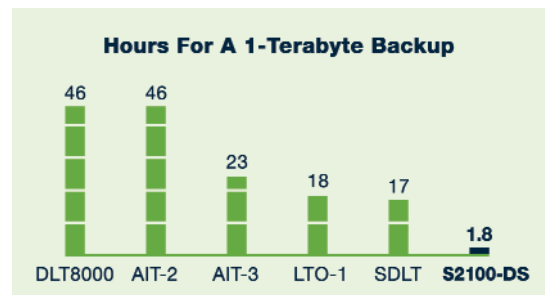
The S2100-DS eliminates tape drive bottlenecks and shrinks backup windows with industry-leading backup speeds up to 540 Gigabytes per hour. Driving this performance is SEPATON's unique, highly optimized replication engine. This

integrated co-processor hosts the SEPATON emulation application and interfaces with media servers and backup hosts. It is capable of 2 gigabit Fibre Channel read/write speeds, with the ability to emulate up to 64 tape drives.

The S2100-DS also accelerates restore times to hard-disk speeds, enhancing your ability to meet tight SLAs.

### EXPANDABLE CAPACITY

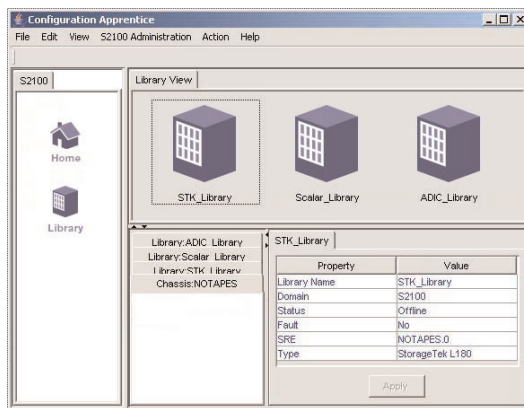
As your backup needs grow, the S2100-DS can accommodate. Start with the 1.5 terabyte configuration and cost-effectively upgrade capacity to 6 terabytes in a single appliance, without expanding the footprint.



SEPATON's high-performance emulation technology enables a RAID-based virtual tape library with staggering speed, as compared to traditional tape libraries.

### ROCK-SOLID RELIABILITY

The ATA RAID 5-based storage of the S2100-DS is inherently more reliable than traditional tape backup. The S2100-DS eliminates aborted backups due to tape drive mechanical failures—improving backup efficiency and ensuring critical data is safe and sound. Hot swappable components, including redundant cooling and power, further enhance availability.



SEPATON's graphical user interface (GUI) makes setup and configuration fast and easy. As your needs change, the S2100-DS can be easily reconfigured to meet new requirements.

## SPECIFICATIONS

<b>Capacity:</b>	1.5 Terabytes minimum, 6 Terabytes maximum
<b>Performance:</b>	150 MB/second maximum
<b>Host Interface:</b>	2 Gigabit Fibre Channel, 1 port
<b>Tape library emulations:</b>	Single or Multiple; up to 16 concurrent library emulations per appliance
<b>Emulates:</b>	StorageTek L Series, ADIC Scalar 24, ADIC Scalar 1000, ADIC Scalar 10K, Quantum/ATL P Series
<b>Tape drive emulations:</b>	Up to 64 Emulates: IBM Ultrium LTO-1 (IBM Model T200), IBM Ultrium LTO-2 (IBM Model T400), IBM Magstar 3590 (Models E and B), Quantum DLT7000, Quantum DLT8000, Quantum SuperDLT320, Sony AIT-2, Sony AIT-3, StorageTek 9840, StorageTek 9940A, StorageTek 9940B

## PHYSICAL CHARACTERISTICS

Standard 4U rack-mountable

<b>Height:</b>	7 in.
<b>Width:</b>	19 in.
<b>Depth:</b>	29 in.

## POWER REQUIREMENTS

<b>Voltage:</b>	115/220VAC (auto-sensing)
<b>Frequency:</b>	47Hz to 63Hz
<b>Max Current:</b>	5A (115V) 3A (220V)
<b>Power Cord Plug:</b>	NEMA 5-15P Dual power cords (115V) SCHUKO CEE 7/7 Dual power cords (220V) MAINS Y Splitter 5A
<b>Max Power Consumption:</b>	875W
<b>Weight:</b>	95 lbs. (44.2 kg)

## ENVIRONMENTAL (Operating Ranges)

<b>Humidity:</b>	10-80% non-condensing
<b>Temperature:</b>	10-40 degrees C
<b>Max. Altitude:</b>	10,000 ft (3050 m)
<b>Vibration:</b>	.25 G @ 3Hz – 20Hz for 15 mins
<b>Shock:</b>	1 shock up to 20 G for 2 msec
<b>Agency Approvals:</b>	FCC Class A Part 15, UL 1950 Listed, EN 60950, EN 55022, EN 55024

### A Commitment to Data Protection

At SEPATON, we are entirely focused on a single goal: to provide the most capable, easy-to-use enterprise data protection solutions available. Our breakthrough solutions enable organizations to keep pace with their growing information protection needs, while reducing their total cost of ownership. With significant engineering resources and innovative, proprietary technologies, SEPATON is committed to expanding its family of solutions to provide the industry's most complete solution for protecting your critical data—and preserving your technology investment.

© 2004 SEPATON Inc.

SEPATON™ and S2100-DS™ are trademarks of SEPATON Inc. Other product and company names mentioned herein may be trademarks and/or registered trademarks of their respective companies.